

PUSH TO CONNECT: COPPER, PEX, PE-RT & CPVC

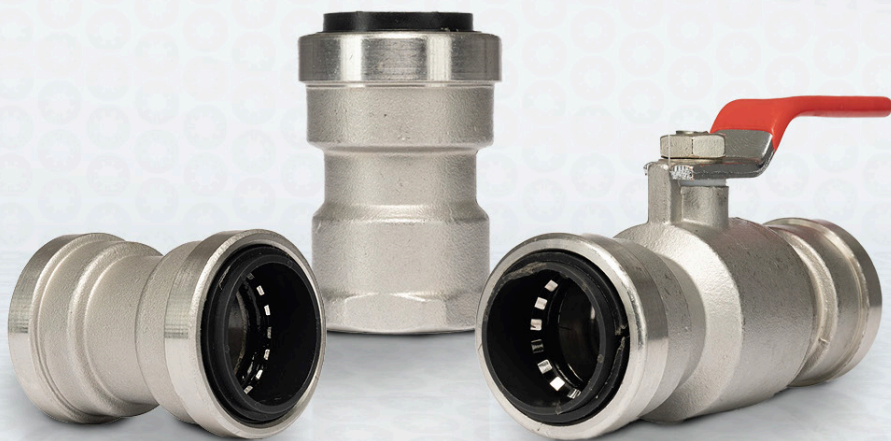
# QUICKFITTING<sup>®</sup>

## STAINLESS STEEL

OVERBUILT, NOT OVERPRICED.

## BUILT TO LAST

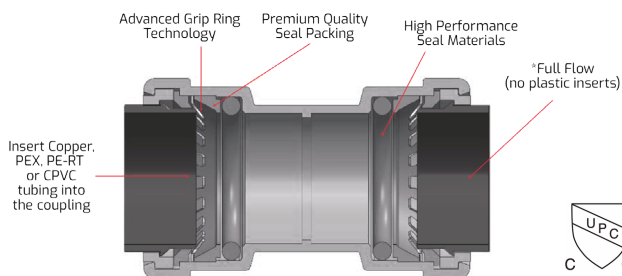
- 304 Stainless Steel Construction
- Patented Technology
- Available in larger sizes (up to 2")
- Corrosion Resistant
- 100% Lead Free
- Tested to ASSE 1061/NSF 61/NSF 372 standards and are listed by IAPMO, meeting UPC, IPC and cUPC requirements.



REMOVABLE • REUSABLE • PUSH CONNECT • NO HARMFUL CHEMICALS • FULL FLOW

## OUR PREMIUM CONSTRUCTION PROVIDES SUPERIOR PERFORMANCE AND THE INDUSTRY'S BEST WARRANTY.

Why install inferior metal or plastic fittings that are made or warranted to last about as long as a fluorescent bulb? Accept no substitutes, choose the only brand of fitting with an up to 75-year warranty.



\*When using PEX or PE-RT, a Hi-Flo tube stiffener should be inserted into the PEX or PE-RT tubing end prior to insertion into the fitting or valve.

## INSTALLS IN SECONDS.

75% FASTER than traditional methods, including soldering.



NO GLUE



NO FLAMES



NO TOOLS  
NEEDED



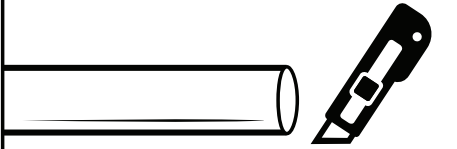
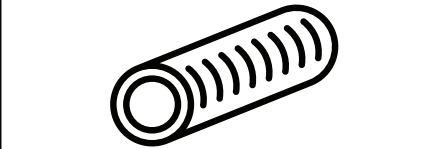
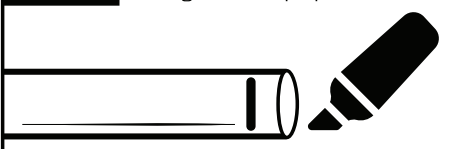
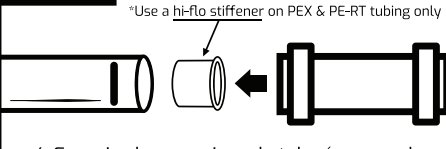
WARRANTY

[www.QuickFitting.com](http://www.QuickFitting.com)

QUICK FITTING HOLDING COMPANY, LLC.  
655 WATERMAN AVE., EAST PROVIDENCE, RI, USA 02914  
TEL: (877) 238-4826 / FAX: (877) 258-4826

LITSSPTC 081222

# EASY INSTALL, EASY APPLICATION JUST PUSH TO CONNECT

<p><b>1 CUT IT</b> Cut your copper, PEX, PE-RT, or CPVC tubing using a sharp tubing cutter.</p>  <p>1. Corte la tubería usando un recortador afilado.</p>	<p><b>2 CLEAN IT</b> Clean the tubing, and use a deburring tool to ensure proper connection.</p>  <p>2. Limpie y quite las rebabas de la tubería.</p>
<p><b>3 MARK IT</b> Mark the insertion depth on the tubing to ensure proper insertion.</p>  <p>3. Marque la profundidad de inserción.</p>	<p><b>4 PUSH IT</b> Push the fitting or valve to meet the insertion depth mark...you're done. <small>*Use a hi-flo stiffener on PEX &amp; PE-RT tubing only</small></p>  <p>4. Empuje el accesorio en la tubería marcada. <small>*Use un refuerzo hi-flo para tubería de PEX y PE-RT</small></p>

## PATENTED SLIP CLIP™ RELEASE TOOL

QuickFitting push technology features a more secure connection than standard fittings, all while giving the user full control through our patented smart release tool.

With our patented Slip Clip release tool, you can easily remove, reposition, and reuse our technology.

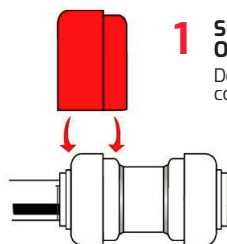
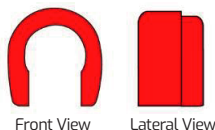
We offer an extensive selection of SKUs in our brass push fitting technology. Both professionals and do-it-yourselfers will find the right solution for their plumbing requirements with QuickFitting. You just can't beat advanced patented technology, extensive selection, premium quality and superior value proposition.

SLIP CLIP™ RELEASE TOOL FOR BRASS & STAINLESS STEEL

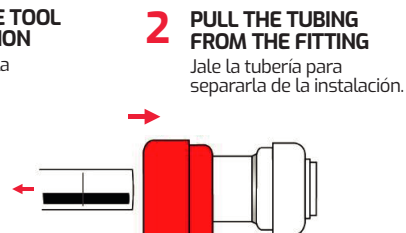


INTRODUCING SLIP CLIP™ RELEASE TOOL FOR COPPER

SLIP CLIP RELEASE TOOL  
Herramienta de remoción



**1 SLIDE THE SLIP CLIP RELEASE TOOL OVER THE FITTING CONNECTION**  
Deslice el clip de remoción sobre la conexión de ajuste



**2 PULL THE TUBING FROM THE FITTING**  
Jale la tubería para separarla de la instalación.

[www.QuickFitting.com](http://www.QuickFitting.com)

QUICK FITTING HOLDING COMPANY, LLC.  
655 WATERMAN AVE., EAST PROVIDENCE, RI, USA 02914  
TEL: (877) 238-4826 / FAX: (877) 258-4826