

ProBite® Push-Fit Valves & Fittings for Plumbing, Heating & Irrigation

U.S. & Foreign
Patents Pending



The right choice:

- 1:** Approved for copper, PEX & CPVC plumbing & heating
- 2:** *FAST*, instant connection
- 3:** Wide selection of fittings, valves & stops
- 4:** No special tools, glue or soldering
- 5:** Install in wet or dry system. Removable & Reusable!
- 6:** **75-YEAR Warranty!**
(see www.ProBite.com for details)

Wide Assortment



Wide assortment of lead-free brass connectors & adapters.

SIZE RANGE:
1/4" - 2" Lead-free brass

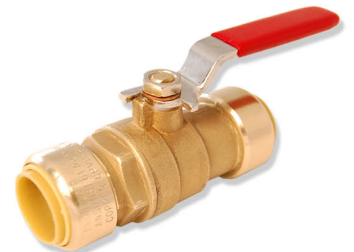
Push Connect Stops



Lead-free straight, angle turn & tee supply stops & hose connectors.

SIZE RANGE:
1/4" - 3/4" Chrome plated lead-free brass.

Integrated Ball Valves



Lead-free, full flow, quarter turn ball valves.

SIZE RANGE:
1/2" - 1" push-fit full port ball valves

**Certified, tested and approved for plumbing & heating
in-wall (no access) and below ground burial.**

PROBite®
Push Connect Fittings & Valves

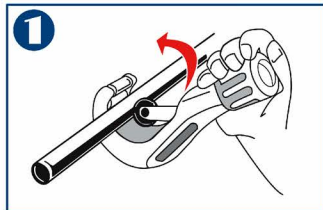
ProBite® fittings have been tested to ASSE 1061/NSF 61 standards and are listed by IAPMO, meeting UPC, IPC and cUPC requirements. ProBite® push connect fittings are certified for potable water and hydronic heating applications. Approved for underground and behind walls without access panels. ProBite® Hi-Flo tube stiffeners should be used when plumbing with PEX tubing.

www.ProBite.com

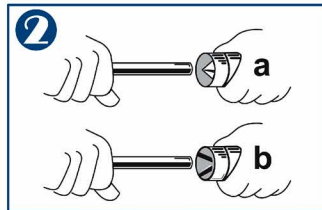


Installation Tips

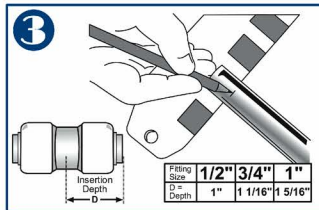
PROBite® Installation - Cut, clean, mark it, push connect, you're done!



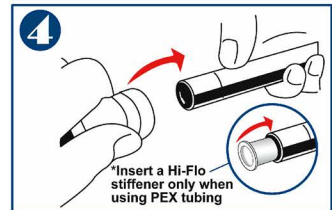
1. Cut the pipe or tubing



2. (2a) Ream, then de-burr (2b)



3. Mark the insertion depth



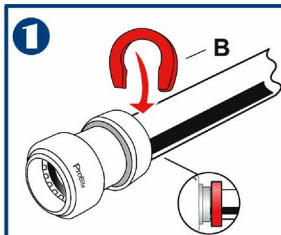
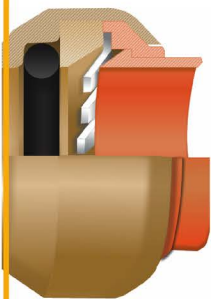
4. Insert the pipe or tubing.

*Insert a Hi-Flo stiffener only when using PEX tubing

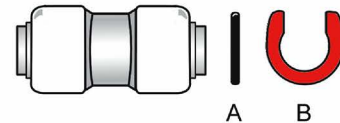


Removal & Reuse

PROBite® Removal - Attach removal clip & depress to remove



ProBite sealing O-rings (A) are easily removed and replaced (U.S. & Foreign Patents Pending).



A. Replaceable sealing ring
B. Removal clip

Note: A Quick Fitting Hi-Flo tube stiffener should be used on PEX pipe.



Frequently Asked Questions

Can I use ProBite push-fit on new construction and remodeling?

Yes, ProBite fittings and valves can be used in all types of plumbing and heating applications.

Should I use sealant when installing ProBite?

Glues or sealants should never be used during the installation.

Will water in the system effect the installation?

No, the presence of water will not effect the plumbing connection. The system should be depressurized and/or cooled to avoid injury.

Can I connect copper to PEX with the same fitting or valve?

Yes, ProBite fittings and valves can be used to connect copper, PEX or CPVC with the same fitting.

Why do you recommend marking the insert depth on the tubing?

The marking determines the proper insertion of the tubing into the fitting or valve.

Can I reposition the fitting once it has been installed?

Yes, ProBite fittings and valves can be turned or repositioned without effecting the performance of the fitting or the integrity of the seal..

How does the removal clip work?

When pressing the removal clip against the plastic pusher, the pusher depresses the stainless steel grip ring away from the tubing.

How does push-fit technology work?

When the tubing is inserted past the seal and grip ring, the o-ring creates an instant watertight seal on the outside of the tubing. The grip ring applies opposing force, while imbedding the grip teeth onto the surface of the tubing.

Can the push-fit fitting pop off?

No, a properly installed fitting takes approximately 14 lbs of force to push onto the tubing. The same fitting would require over 600 lbs of opposing force to pull it from the tube.

What is the temperature and pressure rating?

ProBite fittings and valves are tested and certified to temperatures up to 200° F and fluid pressures to 200 PSI.

Are ProBite fittings and valves lead-free compliant?

Yes, we offer a complete line of lead-free products that are tested and certified to North American Lead Law standards.