

CopperHead®

Copper Push Fittings for Plumbing & Heating






The right choice:

- 1:** Approved for use on copper, PEX & CPVC plumbing & heating
- 2:** *FAST*, instant connection
- 3:** Wide selection of fittings, valves & stops
- 4:** No special tools, glue or soldering
- 5:** Installs in a wet or dry system
- 6:** Removable & Reusable!

U.S. Patents 8,480,134
8,398,122



Features 	Technical Data 	Key Benefits 
<ul style="list-style-type: none"> • Dual Seal • No Lead • No Zinc • No Arsenic Additives • Antimicrobial Properties • Lead Law Compliant • U.S. Manufactured Fastening Technology 	<ul style="list-style-type: none"> • Rated 250° F / 250 PSI • Dezincification Resistant • Chloramines Resistant • IAPMO Listed • Approvals: cUPC, ASSE 1061 NSF 61, IPC, Annex G • Approved for in-wall (no access) and below ground 	<ul style="list-style-type: none"> • 100% More Sealing Surface • No Harmful Chemicals • Outer Seal Protects the Inner Seal from the Environment • CopperHead® is a Made from 99% Pure Copper, a Natural Anti-Microbial, which Inhibits Bacteria Growth

CopperHead®
Pure Copper Push Fittings

CopperHead® fittings have been tested to ASSE 1061/NSF 61 standards and are listed by IAPMO, meeting UPC, IPC and cUPC requirements. CopperHead® is certified for potable water and hydronic heating applications meeting Nationwide Lead Law standards/ Quick Fitting Hi-Flo™ tube stiffeners should be used when plumbing with PEX tubing.

www.QuickFitting.com

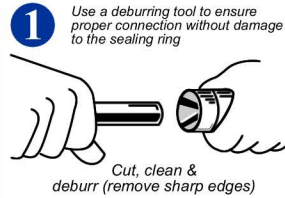


Installation Tips

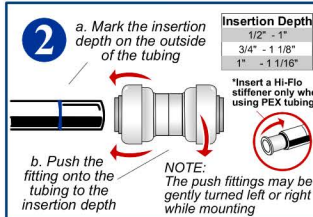
Installation - Cut, clean, mark the tube, push to connect... you're done!

Information

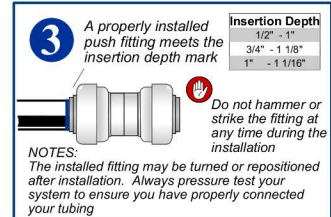
- Tubing ends should be cut using a sharp tubing (wheel style) cutter. Never use a hacksaw or saw blades to cut tubing.
- Copper, PEX or CPVC tubing should be clean and free of solder, paint or scarring.
- PEX tubing is often rated to a maximum water temperature of 180° F, while hot water boiler systems often range from 160° - 200° F.



1. Cut and deburr the tubing



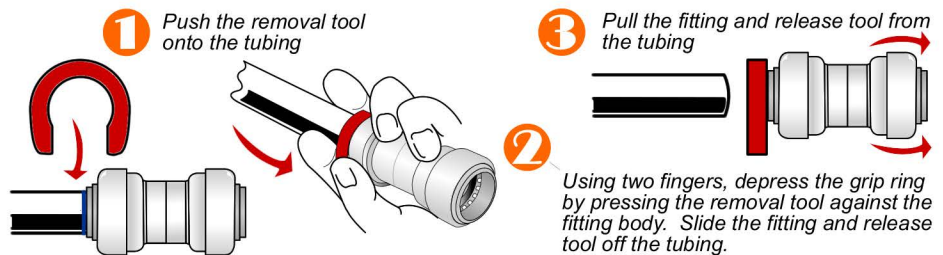
2. Mark the insertion depth



3. Test your connections

Removal & Reuse - Attach the removal clip & depress the grip ring to remove.

CopperHead push fittings may be repositioned, removed or reused many times. Always ensure your system has been completely depressurized to avoid injury during the removal. Inspect fittings for wear or damage prior to reuse.



NO GLUE



NO FLAMES

No Glue, No Flames... It's as Fast and Easy as 1, 2, 3!!



Frequently Asked Questions

Can I use push-fit on new construction and remodeling?

Yes, CopperHead® fittings and valves can be used in all types of plumbing and heating applications.

Should I use sealant when installing CopperHead®?

Glues or sealants should never be used during the installation.

Will water in the system effect the installation?

No, the presence of water will not effect the plumbing connection. The system should be depressurized and/or cooled to avoid injury.

Can I connect copper to PEX with the same fitting or valve?

Yes, CopperHead® fittings and valves can be used to connect copper, PEX or CPVC with the same fitting.

Why do you recommend marking the insert depth on the tubing?

The marking determines the proper insertion of the tubing into the fitting or valve.

Can I reposition the fitting once it has been installed?

Yes, push fittings and valves can be turned or repositioned without effecting the performance of the fitting or the integrity of the seal.

How does the removal clip work?

When pressing the removal clip against the plastic pusher, the pusher depresses the stainless steel grip ring away from the tubing.

How does push-fit technology work?

When the tubing is inserted past the seal and grip ring, the o-ring creates an instant watertight seal on the outside of the tubing. The grip ring applies opposing force, while imbedding the grip teeth onto the surface of the tubing.

Can the push-fit fitting pop off?

No, a properly installed fitting takes approximately 14 lbs of force to push onto the tubing. The same fitting would require over 600 lbs of opposing force to pull it from the tube.

What is the temperature and pressure rating?

CopperHead® fittings are tested and certified to temperatures up to 250° F and fluid pressures to 250 PSI.

Are CopperHead® fittings and valves lead-free compliant?

Yes, CopperHead® fittings are manufactured using lead free copper and are certified to North American Lead Law standards.