



PROBite®

Push Connect Fittings & Valves

www.quickfitting.com

ProBite® Lead Free List Pricing January 15, 2015

Pricing effective as of January 15, 2015, is subject to change without notice.
This pricing revision replaces all previously stated pricing communications.

Note: Given the market volatility of commodity metals such as copper, please check with the factory before providing contract or extended term pricing.

Quick Fitting, Inc.
30 Plan Way
Warwick, Rhode Island 02886
Tel: (401) 734-9500
Fax: (401) 734-9501





About Quick Fitting

Quick Fitting Inc. is an innovative U.S. inventor, manufacturer and supplier of quick connection technology that provides a simpler, safer, and a more cost effective solution for connecting copper, PEX and CPVC piping in plumbing and heating applications. No open flames or sealants needed, just quickly clean the end of the tube and snap into place; a proven method that requires no special skills.



Located in our 100,000 square foot World Headquarters in Warwick, Rhode Island, Quick Fitting has become a leading innovator in push to connect technology with 12 U.S. patents and many patents pending.

Our simple push fitting technology makes it easy to professionally plumb even the most difficult installations, saving the installer up to 90% of the installation time over conventional soldering or welding methods. For plumbing professionals, the increased speed offers the ability to complete more jobs in less time, increasing the number of daily service calls and their profitability. In addition, our fittings are designed and warranted to last longer than any other conventional method, 75 years.

We manufacture a broad selection of innovative push to connect products with a compelling, competitive value proposition. In addition to our strengths as a high-quality, world-class manufacturing company, Quick Fitting has consistently developed and delivered on new product innovations. Innovation is in everything we do at Quick Fitting. Perhaps that's one reason Quick Fitting has been honored twice in by receiving the prestigious Plant Engineering "Product of the Year Award" for our innovations in push connect plumbing technology.

Quick Fitting is the clear alternative to any competitive product in the market today.



ProBite® Low Lead Law Compliant Products

Did you know existing brass faucets, controls, fittings and valves in your plumbing system may contain high levels of lead?

As we learned years ago with lead paint, lead can be very dangerous to humans. This danger brought about laws that prohibited the use of lead based paints, and now, there is a **lead law** that lowers the acceptable Pb (lead) levels in all brass products used in potable water systems. Potable water systems are water systems used for both cooking and consumption.



In 2006, California passed the AB1953 Lead Law, which went into effect on January 1, 2010. The law mandates lead levels on products used in a potable water system to contain less than .25 percent lead. In January 2011, the U.S. Safe Drinking Water Act was signed into law. The law takes effect Nationwide on January 4, 2014. By 2014, all plumbing fittings used in water systems for cooking and potable water must be lead-free (less than .25% lead).



ProBite® makes complying with the Lead Law very easy by providing Lead Law compliant lead free Brass fittings. These forged fittings are designed to be easy to install by simply pushing the fitting onto the tubing.

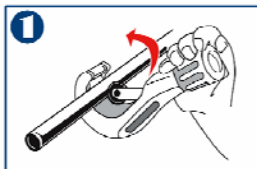
In addition to our lead law compliant brass, ProBite® fittings and valves are tested to be lead-free, dezincification resistant brass. The high-performance seals used in our push fit products are tested to be Chloramine resistant.

Installation of our push fittings takes just a few seconds, and it is easy for professionals, as well as those who are completing do-it-yourself projects.

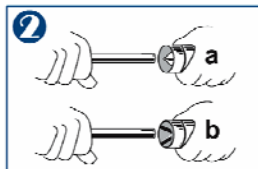


Installation Tips

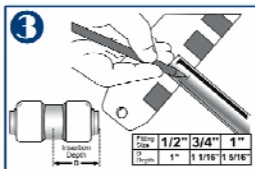
PROBite® Installation - Cut, clean, mark it, push connect, you're done!



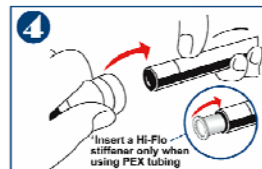
1. Cut the pipe or tubing



2. (2a) Ream, then de-burr (2b)

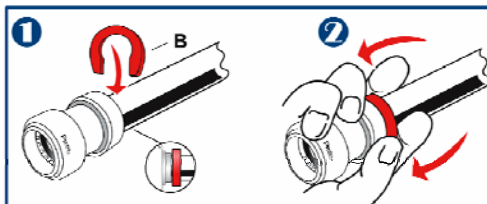


3. Mark the insertion depth



4. Insert the pipe or tubing.
*Insert a Hi-Flo stiffener only when using PEX tubing

PROBite™ Removal - Attach removal clip & depress to remove



ProBite sealing O-rings (A) are easily removed and replaced (U.S. & Foreign Patents Pending).



A. Replaceable sealing ring
B. Removal clip

Note: A Quick Fitting Hi-Flo tube stiffener should be used on PEX pipe.

Why Choose ProBite® Lead-free Brass Push Technology?

ProBite® delivers superior technology, premium quality, value pricing and the widest selection of any competitive push fit brand.



- **Extensive Product Offering**
- **U.S.A. Made Grip Technology**
- **Superior Merchandising**
- **Proven Performance**
- **Advanced Design**
- **Competitive Pricing**

ProBite® provides your company with the Most extensive push fit brand offering available today. With over 190 SKUs in brass push fitting technology, shoppers will choose ProBite® for its advanced technology, extensive selection, premium quality and value pricing.

ProBite's lead-free brass includes design enhancements that deliver increased sealing performance, as well as the industry's lowest insertion forces for push fit products.



What's Next...?

Quick Fitting has planned several new product launches over the next year that will encompass technological innovations in push-to-connect fittings, telescoping plumbing valves, heating controls, frost-free connectors, installation kits and supply line connectors.



In addition to our Made in the USA fastening technology, all of our push fitting products are individually inspected (100%) and packaged at our Warwick, Rhode Island facility, using packaging materials that are made in the U.S.A..

ProBite® push to connect fittings & valves install in seconds, never requiring glue, crimping or soldering. ProBite® fittings connect copper, PEX and CPVC quickly and effortlessly, making quick work of every plumbing project, ensuring a permanent leak-free seal every time.

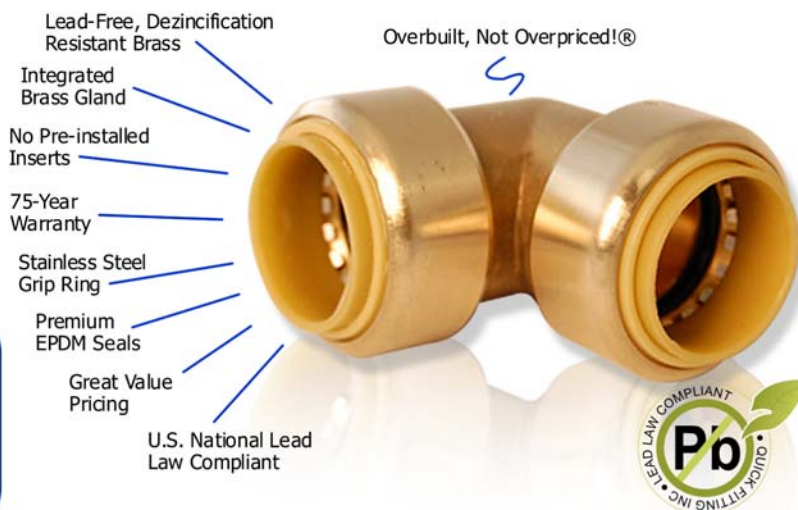
In addition to being full flow, removable and reusable, ProBite® products are manufactured with lead-free, forged brass.

ProBite® Quick Facts

- Approved to 200 PSI, 200° F
- 700 - 2,100 lb. pull testing
- Common Applications: Plumbing, heating, plant water, solar heating, irrigation, chilled beam and more.

Certifications

- ASSE 1061
- ANSI/NSF 61
- cUPC
- IPC
- Lead Free



PROBite® Couplings



Part Number	Product Description	Bag QTY	Box QTY	List Price	Code
LF881	¼" x ¼" Straight Coupling, Lead-free	1	60	\$7.19	C
LF801	3/8" x 3/8" Straight Coupling, Lead-free	1	50	\$8.39	C
LF811	½" x ½" Straight Coupling, Lead-free	1	40	\$7.09	C
LF811PBY	½" x ½" Polybutylene Transition Coupling	1	40	\$7.39	C
LF821	¾" x ¾" Straight Coupling, Lead-free	1	30	\$8.49	C
LF821PBY	¾" x ¾" Polybutylene Transition Coupling	1	30	\$8.79	C
LF831	1" x 1" Straight Coupling, Lead-free	1	25	\$16.59	C
LF851	1 ¼" x 1 ¼" Straight Coupling, Lead-free, Dual Seal Technology ProSeal™	1	10	\$49.36	C
LF861	1 ½" x 1 ½" Straight Coupling, Lead-free, Dual Seal Technology ProSeal™	1	6	\$71.70	C
LF871	2" x 2" Straight Coupling, Lead-free, Dual Seal Technology ProSeal™	1	4	\$93.51	C

PROBite® Repair Coupling



Part Number	Product Description	Bag QTY	Box QTY	List Price	Code
LF817	½" x ½" Repair Coupling, Lead-free, w/ Disconnect Tool (PB711)	1	30	\$15.49	C
LF827	¾" x ¾" Repair Coupling, Lead-free, w/ Disconnect Tool (PB721)	1	20	\$18.69	C
LF837	1" x 1" Repair Coupling, Lead-free, w/ Disconnect Tool (PB731)	1	10	\$26.49	C

PROBite® Slip Repair Tees



Part Number	Product Description	Bag QTY	Box QTY	List Price	Code
LF8147	½" x ½" x ½" Slip Tee, Lead-free, w/ Tool	1	20	\$18.51	C
LF8147F	½" x ½" x ½" FNPT Slip Tee, w/ Disconnect	1	20	\$19.29	C
LF8247	¾" x ¾" x ¾" Slip Tee, Lead-free, w/ Tool	1	15	\$21.79	C
LF8247F	¾" x ¾" x ¾" FNPT Slip Tee, w/ Disconnect	1	15	\$22.49	C

PROBite® Reducing Coupling



Part Number	Product Description	Bag QTY	Box QTY	List Price	Code
LF8408	3/8" x 1/4" Reducing Coupling, Lead-free	1	50	\$8.39	C
LF8401	3/8" x 1/2" Reducing Coupling, Lead-free	1	50	\$8.49	C
LF841	3/4" x 1/2" Reducing Coupling, Lead-free	1	30	\$9.09	C
LF8413	1" x 3/4" Reducing Coupling, Lead-free	1	25	\$18.19	C
LF8451	1 1/4" x 1" Reducing Coupling, Lead-free, Dual Seal Technology ProSeal™	1	10	\$49.36	C
LF8461	1 1/2" x 1 1/4" Reducing Coupling, Lead-free, Dual Seal Technology ProSeal™	1	6	\$71.70	C
LF8471	2" x 1 1/2" Reducing Coupling, Lead-free, Dual Seal Technology ProSeal™	1	5	\$93.51	C

PROBite® Copper Tube Size Adapters



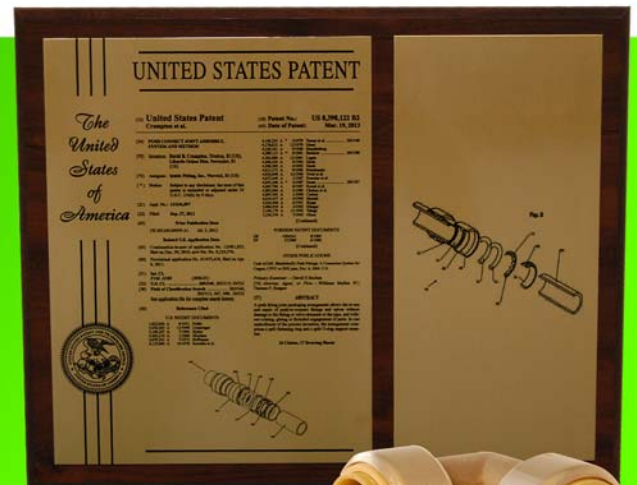
Part Number	Product Description	Bag QTY	Box QTY	List Price	Code
LF8338	1/2" CTS x 3/8" Push Reducer, Lead-free	1	30	\$10.39	C
LF8348	3/4" CTS x 3/8" Push Reducer, Lead-free	1	30	\$10.99	C
LF8138	1" CTS x 1/2" Push Reducer, Lead-free	1	24	\$13.79	C
LF8238	1" CTS x 3/4" Push Reducer, Lead-free	1	24	\$15.59	C
LF8228	3/4" CTS x 3/4" FNPT, Lead-free, WH Adapter	1	32	\$15.09	C

* Used to reduce tube sizing, leaving a male copper tube size (CTS) adapter end.

ProBite®, Push Connect®, Quick Fitting®, Locjaw® and "Overbuilt, not Over-priced"® are registered trademarks of Quick Fitting, Inc. These materials are the copyright of Quick Fitting, Inc. 2015 – All rights reserved.

We Lead...
with Innovation, Produce
with Quality and Deliver
Superior Value!

- 12 U.S. Patents
- Many Patents Pending
- 2 "Product of the Year" Awards



PROBite® Adapters



Part Number	Product Description	Bag QTY	Box QTY	List Price	Code
LF882F	¼" x ¼" FNPT Straight Female Adapter, Lead-free	1	60	\$6.79	C
LF802F	3/8" x 3/8" FNPT Straight Female Adapter, Lead-free	1	50	\$6.99	C
LF840F	3/8" x ½" FNPT Straight Female Adapter, Lead-free	1	50	\$7.09	C
LF812F	½" x ½" FNPT Straight Female Adapter, Lead-free	1	40	\$6.79	C
LF822F	¾" x ¾" FNPT Straight Female Adapter, Lead-free	1	30	\$7.39	C
LF842F	½" x ¾" FNPT Straight Female Adapter, Lead-free	1	30	\$7.59	C
LF832F	1" x 1" FNPT Straight Female Adapter, Lead-free	1	25	\$12.99	C
LF8322F	1" x ¾" FNPT Straight Female Adapter, Lead-free	1	25	\$12.29	C
LF852F	1 ¼" x 1 ¼" FNPT Straight Female Adapter, Lead-free, Dual Seal Technology ProSeal™	1	10	\$44.68	C
LF862F	1 ½" x 1 ½" FNPT Straight Female Adapter, Lead-free, Dual Seal Technology ProSeal™	1	8	\$ 64.42	C
LF872F	2" x 2" FNPT Straight Female Adapter, Lead-free, Dual Seal Technology ProSeal™	1	6	\$ 84.15	C



LF882M	¼" x ¼" MNPT Straight Male Adapter	1	60	\$6.19	C
LF802M	3/8" x 3/8" MNPT Straight Male Adapter	1	50	\$6.29	C
LF840M	3/8" x ½" MNPT Straight Male Adapter	1	50	\$6.69	C
LF812M	½" x ½" MNPT Straight Male Adapter	1	40	\$5.79	C
LF842M	½" x ¾" MNPT Straight Male Adapter	1	30	\$7.29	C
LF822M	¾" x ¾" MNPT Straight Male Adapter	1	30	\$7.59	C
LF8233M	¾" x 1" MNPT Straight Male Adapter	1	25	\$12.29	C
LF8322M	1" x ¾" MNPT Straight Male Adapter	1	25	\$12.39	C
LF832M	1" x 1" MNPT Straight Male Adapter	1	25	\$13.69	C
LF852M	1 ¼" x 1 ¼" MNPT Straight Male Adapter, Lead-free, Dual Seal Technology ProSeal™	1	10	\$44.68	C
LF862M	1 ½" x 1 ½" MNPT Straight Male Adapter, Lead-free, Dual Seal Technology ProSeal™	1	8	\$64.41	C
LF872M	2" x 2" MNPT Straight Male Adapter, Lead-free, Dual Seal Technology ProSeal™	1	6	\$84.15	C

PROBite® Elbows



Part Number	Product Description	Bag QTY	Box QTY	List Price	Code
LF883	¼" x ¼" Elbow, Lead-free	1	60	\$8.99	C
LF8833F	¾" GH x ¼" Dishwasher Elbow, Lead-free	1	30	\$10.99	C
LF803	3/8" x 3/8" Elbow, Lead-free	1	40	\$9.29	C
LF813	½" x ½" Elbow, Lead-free	1	40	\$7.99	C
LF823	¾" x ¾" Elbow, Lead-free	1	25	\$10.89	C
LF843	¾" x ½" Elbow, Lead-free	1	25	\$10.89	C
LF833	1" x 1" Elbow, Lead-free	1	15	\$19.29	C
LF8343	1" x ¾" Reducing Elbow, Lead-free	1	15	\$24.89	C
LF853	1 ¼" Elbow, Lead-free, Dual Seal Technology ProSeal™	1	8	\$54.03	C
LF863	1 ½" Elbow, Lead-free, Dual Seal Technology ProSeal™	1	5	\$78.95	C
LF873	2" Elbow, Lead-free, Dual Seal ProSeal™	1	3	\$102.85	C

PROBite® Drop Ears



Part Number	Product Description	Bag QTY	Box QTY	List Price	Code
LF803D	3/8" x 3/8" FNPT Elbow Drop Ear, Lead-free	1	40	\$10.39	C
LF800D	3/8" x 1/2" FNPT Elbow Drop Ear, Lead-free	1	40	\$10.69	C
LF810D	1/2" x 1/2" Elbow Drop Ear, Lead-free	1	40	\$10.57	C
LF810FH	1/2" x 1/2" FNPT Elbow Hy-Ear, Lead-free	1	40	\$10.55	C
LF813D	1/2" x 1/2" FNPT Elbow Drop Ear, Lead-free	1	40	\$10.19	C
LF820D	3/4" x 3/4" FNPT Elbow Drop Ear, Lead-free	1	25	\$15.59	C

PROBite® Elbows



Part Number	Product Description	Bag QTY	Box QTY	List Price	Code
LF803F	3/8" x 3/8" FNPT Elbow, Lead-free	1	40	\$ 8.69	C
LF813F	1/2" x 1/2" FNPT Elbow, Lead-free	1	40	\$ 7.69	C
LF823F	3/4" x 3/4" FNPT Elbow, Lead-free	1	30	\$11.22	C



LF803M	3/8" x 3/8" Elbow MNPT, Lead-free	1	40	\$ 8.59	C
LF813M	1/2" x 1/2" Elbow MNPT, Lead-free	1	40	\$ 7.49	C

PROBite® Tees



Part Number	Product Description	Bag QTY	Box QTY	List Price	Code
LF884	1/4" x 1/4" x 1/4" Tee, Lead-free	1	60	\$11.89	C
LF804	3/8" x 3/8" x 3/8" Tee, Lead-free	1	30	\$12.89	C
LF814	1/2" x 1/2" x 1/2" Tee, Lead-free	1	30	\$10.99	C
LF824	3/4" x 3/4" x 3/4" Tee, Lead-free	1	20	\$14.69	C
LF824F	3/4" x 3/4" x 3/4" FNPT Tee, Lead-free	1	20	\$16.16	C
LF834	1" x 1" x 1" Tee, Lead-free	1	15	\$24.69	C
LF834F	1" x 1" x 1" FNPT Tee, Lead-free	1	15	\$25.24	C
LF854	1 1/4" x 1 1/4" x 1 1/4" Tee, Lead-free, Dual Seal Technology ProSeal™	1	6	\$93.50	C
LF864	1 1/2" x 1 1/2" x 1 1/2" Tee, Lead-free, Dual Seal Technology ProSeal™	1	3	\$135.06	C
LF874	2" x 2" x 2" Tee, Lead-free, Dual Seal Technology ProSeal™	1	2	\$178.70	C



LF8014	1/2" x 1/2" x 3/8" Reducing Tee, Lead-free	1	30	\$13.59	C
LF8024	3/8" x 3/8" x 1/2" Reducing Tee, Lead-free	1	30	\$13.59	C
LF844	3/4" x 3/4" x 1/2" Tee, Lead-free	1	20	\$13.19	C
LF815	3/4" x 1/2" x 1/2" Tee, Lead-free	1	20	\$14.09	C
LF825	3/4" x 1/2" x 3/4" Tee, Lead-free	1	20	\$14.69	C
LF835	1" x 1" x 3/4" Tee, Lead-free	1	10	\$22.89	C

PROBite® Arrestors



Part Number	Product Description	Bag QTY	Box QTY	List Price	Code
LF916	1/2" x 1/2" ProBite Water Hammer Arrestor	1	8	\$24.50	C
LF926	3/4" x 3/4" ProBite Water Hammer Arrestor	1	6	\$29.30	C
LF936	1" x 1" ProBite Water Hammer Arrestor	1	5	\$33.97	C

PROBite® End Stops



Part Number	Product Description	Bag QTY	Box QTY	List Price	Code
LF886	¼" End stop, Lead-free	1	120	\$4.99	C
LF806	3/8" End stop, Lead-free	1	100	\$5.99	C
LF816	½" End stop, Lead-free	1	80	\$5.49	C
LF826	¾" End stop, Lead-free	1	60	\$6.99	C
LF836	1" End stop, Lead-free	1	50	\$12.98	C
LF856	1 ¼" End stop, Lead-free, Dual Seal Technology ProSeal™	1	20	\$34.80	C
LF866	1 ½" End stop, Lead-free, Dual Seal Technology ProSeal™	1	12	\$49.88	C
LF876	2" End stop, Lead-free, Dual Seal Technology ProSeal™	1	8	\$65.45	C

PROBite® Ball Valves



Part Number	Product Description	Bag QTY	Box QTY	List Price	Code
LF902	3/8" x 3/8" Full Port Ball Valve, Lead-free	1	30	\$16.39	C
LF912	½" x ½" Full Port Ball Valve, Lead-free	1	25	\$15.49	C
LF922	¾" x ¾" Full Port Ball Valve, Lead-free	1	12	\$20.66	C
LF922D	¾" x ¾" Full Port Valve w/ Drain, Lead-free	1	12	\$25.64	C
LF922F	¾" x ¾" FNPT Full Port Ball Valve, Lead-free		12	\$21.18	C
LF932	1" x 1" Full Port Ball Valve, Lead-free	1	10	\$30.99	C
LF932D	1" x 1" Full Port Valve w/ Drain, Lead-free	1	10	\$45.98	C

PROBite® Stop Valves



Part Number	Product Description	Bag QTY	Box QTY	List Price	Code
LF953A	½" x 3/8" OD. Chrome Plated, ¼ Turn Angle Stop Valve, Lead-free	1	30	\$ 10.60	C
LF953S	½" x 3/8" OD. Chrome Plated, ¼ Turn Straight Stop Valve, Lead-free	1	30	\$ 10.69	C
LF954T	½" x ½" x 3/8" OD Comp., 3-way, Chrome Plated ¼ Turn Stop Valve Tee	1	30	\$13.29	C
LF944T	½" x ½" x 1/4" OD Comp., 3-way, Chrome Plated ¼ Turn Stop Valve Tee	1	30	\$13.19	C
LF914T	½" x 3/8" OD Comp. x 3/8" OD Comp., 3-way, Chrome Plated ¼ Turn Stop Valve Tee	1	30	\$13.39	C
LF974S	½" x 5/8" OD. Chrome Plated, ¼ Turn Straight Stop Valve, Lead-free	1	30	\$12.49	C
LF944A	½" x ¼" OD. Chrome Plated, ¼ Turn Angle Stop Valve, Lead-free	1	30	\$12.09	C
LF944S	½" x ¼" OD. Chrome Plated, ¼ Turn Straight Stop Valve, Lead-free	1	30	\$12.19	C
LF914	½" x ½", ¼ Turn Straight Stop Valve	1	30	\$12.09	C
LF953-QVA	½" x 3/8" OD. Chrome Plated, ¼ Turn Telescoping Angle Valve w/ Bracket	1	12	\$17.90	C
LF953-QVS	½" x 3/8" OD. Chrome Plated, ¼ Turn Telescoping Straight Valve w/ Bracket	1	12	\$17.80	C

PROBite® Check Valves



Part Number	Product Description	Bag QTY	Box QTY	List Price	Code
LF917	½" Check Valve, Lead-free	1	30	\$14.89	C
LF927	¾" Check Valve, Lead-free	1	20	\$17.79	C
LF937	1" Check Valve, Lead-free	1	10	\$29.29	C

PROBite® Contractor Kits



Part Number	Product Description	Bag QTY	Box QTY	List Price	Code
LFC375	Contractor Starter Kit (Includes 2 each: PB811, 821,841, 812F, 822F, 812M, 822M, 813,823; 712, 722; 1 each: PB814, 824, 816, 826, 711, 721,QF102), Lead-free	N/A	1	\$284.59	C
LFK500	Irrigation Starter Kit (Includes 2 each: PB821, 831, 822M, 832M, 823, 833, 722, 732; 1 each: 822F, 832F, 824, 826, 836, 721, 731, QF102)	N/A	1	\$296.59	C

PROBite® Removal Tools



Part Number	Product Description	Bag QTY	Box QTY	List Price	Code
PB741	¼" Disconnect Tool	1	100	\$0.99	C
PB701	3/8" Disconnect Tool	1	100	\$0.99	C
PB711	½" Disconnect Tool	1	100	\$1.09	C
PB721	¾" Disconnect Tool	1	100	\$1.29	C
PB731	1" Disconnect Tool	1	100	\$1.69	C
PB771	1 ¼" Disconnect Tool (Stainless Steel)	1	10	\$21.99	C
PB781	1 ½" Disconnect Tool (Stainless Steel)	1	10	\$22.49	C
PB791	2" Disconnect Tool (Stainless Steel)	1	10	\$23.49	C

PROBite® PEX Stiffeners



Part Number	Product Description	Bag QTY	Box QTY	List Price	Code
PB702	3/8" Tube Stiffener, Hi-Flo (Bag of 10)	10	100	\$2.69	C
PB712	½" Tube Stiffener, Hi-Flo (Bag of 10)	10	100	\$2.79	C
PB722	¾" Tube Stiffener, Hi-Flo (Bag of 10)	10	100	\$2.99	C
PB732	1" Tube Stiffener, Hi-Flo (Bag of 10)	10	100	\$4.69	C
PB752	1 ¼" Tube Stiffener, Hi-Flo (Bag of 2)	2	40	\$3.99	C
PB762	1 ½" Tube Stiffener, Hi-Flo (Bag of 2)	2	40	\$6.99	C
PB772	2" Tube Stiffener, Hi-Flo (Bag of 2)	2	40	\$9.99	C



PB702B	3/8" Tube Stiffener, Hi-Flo (Bulk bag of 150)	150	4500	\$38.49	C
PB712B	½" Tube Stiffener, Hi-Flo (Bulk bag of 100)	100	4500	\$26.69	C
PB722B	¾" Tube Stiffener, Hi-Flo (Bulk bag of 100)	100	4500	\$28.59	C
PB732B	1" Tube Stiffener, Hi-Flo (Bulk bag of 50)	50	4500	\$22.19	C

PROBite® Water Heater Kits



Part Number	Product Description	Bag QTY	Box QTY	List Price	Code
LF718K	½" Water Heater Installation Kit; Includes (2) LF812F & (1) PB711, Lead-free	1	30	\$14.49	C
LF7128K	½" x ¾" FNPT Water Heater Installation Kit; Includes (2) LF842F & (1) PB711, Lead-free	1	20	\$19.49	C
LF728K	¾" Water Heater Installation Kit; Includes (2) LF822F & (1) PB721, Lead-free	1	20	\$17.89	C

PROBite® Supply Lines



Part Number	Product Description	Bag QTY	Box QTY	List Price	Code
LF715	1/2" PF x 1/2" PF, 18" SST Repair Hose	1	10	\$12.06	C
LF715F	1/2" PF x 1/2" FIP Push, 18" SST Hose	1	10	\$11.06	C
LF716	1/2" PF x 1/2" PF, 12" SST Repair Hose	1	10	\$11.76	C
LF716F	1/2" PF x 1/2" FIP, 12" SST Repair Hose	1	10	\$10.82	C
LF717F	1/2" PF x 1/2" FIP, 24" SST Repair Hose	1	10	\$12.17	C
LF725	3/4" PF x 3/4" PF, 18" SST Repair Hose	1	10	\$16.69	C
LF726	3/4" PF x 3/4" PF, 12" SST Repair Hose	1	10	\$15.09	C



LF745S	1/2" Straight Valve x 1/2" FIP, 18" Faucet Connector Hose, w/ EPDM Seal	1	10	\$17.24	C
LF746S	1/2" Straight Valve x 1/2" FIP, 12" Faucet Connector Hose, EPDM Seal	1	10	\$15.76	C
LF747S	1/2" Push Straight Valve x 1/2" FIP, 24" Faucet Connector Hose, EPDM Seal	1	10	\$18.48	C



LF745A	1/2" Push Angle Valve x 1/2" FIP x 18" Faucet Connector Hose, EPDM Seal	1	10	\$15.88	C
LF746A	1/2" Push Angle Valve x 1/2" FIP x 12" Faucet Connector Hose, EPDM Seal	1	10	\$15.26	C
LF747A	1/2" Push Angle Valve x 1/2" FIP x 24" Faucet Connector Hose, EPDM Seal	1	10	\$16.69	C

PF = Push Fitting

PROBite® Toilet Supply Lines



Part Number	Product Description	Bag QTY	Box QTY	List Price	Code
LF756S	1/2" Straight Valve x 7/8" Plastic Female, 12" Toilet Connect Hose	1	10	\$15.98	C
LF755S	1/2" Straight Valve x 7/8" Plastic Female, 18" Toilet Connect Hose	1	10	\$16.75	C
LF756A	1/2" Angle Valve x 7/8" Plastic Female, 12" Toilet Connect Hose	1	10	\$16.06	C
LF755A	1/2" Angle Valve x 7/8" Plastic Female, 18" Toilet Connect Hose	1	10	\$16.81	C

PROBite® Water Heater Connectors



Part Number	Product Description	Bag QTY	Box QTY	List Price	Code
LF7245F	3/4" PF Ball Valve x 3/4" FIP 18" Stainless Steel braided Water Heater Hose	1	10	\$36.06	C
LF7245FP	3/4" PF Ball Valve x 3/4" FIP, Full Port 18" Stainless Steel braided Water Heater Hose	1	10	\$38.06	C
LF725F	3/4" PF x 3/4" FIP, 18" Stainless Steel braided Water Heater Hose, EPDM Seal	1	10	\$15.14	C
LF7125F	1/2" PF x 3/4" FIP, 18" Stainless Steel braided Water Heater Hose, Dual Seal	1	10	\$14.76	C
LF725P	3/4" PF x 3/4" PF, 18" Stainless Steel braided Water Heater Hose	1	10	\$23.89	C
LF726FP	3/4" PF x 3/4" FIP Full Port 12" Stainless Steel braided Water Heater Hose	1	10	\$18.85	C
LF725FP	3/4" PF x 3/4" FIP Full Port 18" Stainless Steel braided Water Heater Hose	1	10	\$20.19	C
LF727FP	3/4" PF x 3/4" FIP Full Port 24" Stainless Steel braided Water Heater hose	1	10	\$23.42	C

Full Port = 3/4" inside diameter SS Flex Hose **PF** = Push Fitting

PROBite® Gauges



Part Number	Product Description	Bag QTY	Box QTY	List Price	Code
LF916P	1/2" ProBite Pressure Gauge Tee	1	10	\$23.43	C
LF926P	3/4" ProBite Pressure Gauge Tee	1	8	\$25.63	C
LF936P	1" ProBite Pressure Gauge Tee	1	4	\$39.05	C
LF916T	1/2" ProBite Temperature Gauge Tee	1	10	\$41.05	C
LF926T	3/4" ProBite Temperature Gauge Tee	1	8	\$43.14	C
LF936T	1" ProBite Temperature Gauge Tee	1	4	\$55.46	C

PROBite® Plumbing Tools



Part Number	Product Description	Bag QTY	Box QTY	List Price	Code
QF201	Premium Mini Tube Cutter 1/8"-5/8"	1	30	\$6.12	C
QF202	Premium Metal Tube Cutter, Tube Sizes 1/8" - 1 1/8"	1	30	\$9.22	C
QF101	High Density Poly Plastic Tube Reamer, blue 1/8"-1 1/8"	1	30	\$7.15	C
QF102	High Density Poly Plastic Tube Reamer, Light Weight, Free-Flow Design Prevents Shaving Build-up, Tube Sizes 3/16"-1 1/2"	1	25	\$9.88	C
QF301	Ratchet Tube Cutter for PEX	1	10	\$11.28	C
QF302	High Torque Premium Tube Cutter, Built in Tube Reamer, File & Spare Cutter Wheel 1/8" - 1 1/2"	1	20	\$13.49	C

PROBite® O-Ring Seals



Part Number	Product Description	Bag QTY	Box QTY	List Price	Code
PB700	3/8" EPDM O-ring (Bag of 10)	1	100	\$4.29	C
PB710	1/2" EPDM O-ring (Bag of 10)	1	100	\$4.19	C
PB720	3/4" EPDM O-ring (Bag of 10)	1	100	\$4.49	C
PB730	1" EPDM O-ring (Bag of 10)	1	100	\$8.98	C
PB770	1 1/4" EPDM O-ring (Bag of 10)	1	100	\$11.99	C
PB780	1 1/2" EPDM O-ring (Bag of 10)	1	50	\$13.89	C
PB790	2" EPDM O-ring (Bag of 10)	1	50	\$14.99	C

PROBite® Silcock & Valve Adapters



Part Number	Product Description	Bag QTY	Box QTY	List Price	Code
LF812FS	1/2" Push X 1/2" Female CTS Silcock Adapter	1	40	\$6.99	C
LF822FS	3/4" Push X 3/4" Female CTS Silcock Adapter	1	30	\$8.89	C
LF812MS	1/2" Push X 1/2" Male CTS Silcock Adapter	1	40	\$6.89	C
LF822MS	3/4" Push X 3/4" Male CTS Silcock Adapter	1	30	\$8.79	C

NOTE: All adapters include thread sealant, which is required for the installation

ProBite®, Push Connect®, Quick Fitting®, Locjaw® and "Overbuilt, not Over-priced"® are registered trademarks of Quick Fitting, Inc. These materials are the copyright of Quick Fitting, Inc. 2015 – All rights reserved.

Thank you
for choosing
ProBite®



Frequently Asked Questions

Joining Copper, PEX or CPVC Tubing

Q: Do I need to prepare the tube ends differently when using push fittings?

A: No, as with sweat copper fittings, the tube must be chamfered, de-burred and reamed (free from burrs and debris). Quick Fitting recommends the use of an Inner/Outer Reamer to chamfer, de-burr and ream tube ends. These steps are essential to ensure the proper connection of your ProBite® push-to-connect fitting. Also, be sure to draw an insertion mark on the tube to indicate the proper insertion of the tubing into the fitting.

Q: What types of tubing can be used with ProBite® fittings?

A: ProBite® connectors are approved for use with Copper, CPVC and PEX.

Q: Should I use a tubing insert stiffener on Copper, PEX and CPVC?

A: A stiffener is only required when connecting PEX tubing.

Q: Should I pressure test my system following the installation of push fittings?

A: Yes, as with all types of plumbing fittings, new installations should be pressure tested to ensure a proper connection.

Q: Can I install push fittings in a wet (charged) system?

A: Push fittings can be installed wet or dry. System pressures should be relieved to avoid injury prior to installation.

Installing, Testing and Flushing Your Push Fit System

Q: Can a ProBite® fittings blow off a water system?

A: NO, the grip ring technology utilizes an opposing force principle, which simply put, the higher the force used to pull the fitting, the deeper the fitting bites into the tubing.

Q: What have ProBite® fittings been tested to at the factory?

A: ProBite® fittings are tensile tested to over 900 pound force and temperatures of 200 °F.

Q: What support hanger spacing must I use with my ProBite® System?

A: Support requirements are identical to a sweat system; as such installers should adhere to local codes. Always fully support heavy loads on your plumbing system.

Q: How do I test my ProBite® system?

A: Pressure testing should be conducted the same way as you would with a Copper sweat system. The system should be installed, pressurized and then held under pressure for a period determined by your local plumbing regulations.

Q: Do I need to lubricate the fitting when installing?

A: No, ProBite® seals are factory-lubricated with an NSF-61 approved lubricant.

Q: Do I still have to flush my system with water?

A: Yes, but the system will be cleaner and flush faster since there is no solder or flux.

Q: Should I use glue or solder when installing ProBite®?

A: Glues, adhesives or sealants are not required and should never be applied to the connection, fitting or tubing.

Q: Are ProBite® fittings approved for underground burial?

A: Yes, our fittings are tested and approved for underground burial and in-wall use. We recommend wrapping the connection in a waterproof tape to avoid aggressive chemicals that may exist in the soil.

Specification for Push Fitting Systems

System

1.1 The fittings and valves shall be of the push to connect type (Manufacturer - Quick Fitting, Inc.) and shall be manufactured to the quality system of ISO 9001 and be ANSI/NSF-61 certified.

1.2 The system shall be full bore passage without diameter restriction for the fittings, in order to avoid high pressure drop.

Pipe

2.1 Copper pipe shall conform to ASTM B-88 and may be type K, L, or M seamless copper.

2.2 CPVC pipe shall conform to ASTM D2846, CSA B137.6.

2.3 PEX tubing shall conform to ASTM F-876, CSA B137.5. Tube support liners provided by Quick Fitting, Inc. shall be used.

2.4 Plumbing systems must be installed in compliance with local plumbing code.

Fittings & Valves

3.1 Fittings and valves shall be NSF-61 certified; and have a maximum operating pressure of 200 PSI at a maximum continuous operating temperature of 200°F. Higher temperatures and pressures may be permissible; please consult with manufacturer.

3.2 Fittings shall utilize copper alloy bodies meeting ASTM B-283 standard with stainless steel gripping teeth and shall use EPDM seals that are certified to NSF-61 service.

3.3 Fittings and valves shall incorporate a one-step connection method: push-to-connect, no pre-lubrication required.

3.4 Fittings and valves shall permit 360° rotation of the pipe while system is depressurized.

3.5 Fittings and valves shall be removable and reusable with the use of a removal tool (Manufacturer - Quick Fitting, Inc.).

3.6 Fittings shall use NSF-61 approved pre-lubricated EPDM seals so that additional lubrication or fitting preparation is not needed.

3.7 Fittings shall be design certified to ASSE-1061 and ANSI/NSF 61 standards.

System Installation

4.1 Fittings shall be installed according to Quick Fitting installation instructions.

4.2 Pipe ends shall be chamfered, de-burred, reamed, and depth marked prior to fitting or valve installation. When cutting tubing, ensure that the ends are cut square and are free of burrs.

4.3 Ensure that there are no scratches, gouges or any form of damage on the circumference of the tube within the specified depth on Table 1.1. Damage in this area may cause leakage. Check the fitting for any signs of damage or foreign objects. Push the ProBite® fitting or valve onto the end of the copper pipe until depth mark is covered.

Insertion Depth Table 1.1

Fitting Size	¼"	3/8"	½"	¾"	1"	1 ¼"	1 ½"	2"
Depth	½"	13/16"	1"	1 1/16"	1 5/16"	1 11/16"	1 5/8"	1 ¾"

4.4 Use only in accordance with Quick Fitting's specifications and operating instructions.

4.5 If PEX tubing is used, then a tube support liner must be used also. The tube support liner acts as an internal support for the end of the tubing.

4.6 When a joint has to be disassembled and then reused, ensure that the tubing removed from the joint has no damage on the circumference within the specified depth on Table 1.1. Inspect the tube and connection for any signs of damage and ensure they are free of foreign materials. The joint can then be reassembled.

4.7 Installations should be pressure tested to ensure proper insertion of the push fittings and valves.

4.8 Installers should never use Pliers or crush the push connect head of the fitting.

Retail Packaging

Quick Fitting® UPC bar-coded retail and private label packaging is available. Consult our Retail Pricing guide or a Quick Fitting representative at (877) 238-4826 for more information.



MINIMUM ORDER SIZE

Minimum net order value is \$75.00.

FREIGHT POLICY

Unless otherwise indicated, products are shipped using carriers that will represent the best "Shipping Value" for our customers. Shipping Value is determined by the quality of performance and further measured by the pricing. Orders in excess of \$1,500 will ship by Quick Fitting's carrier of choice full freight allowed (FFA) to the contiguous United States.

QUICK FITTING® PRODUCT RETURN POLICY

Purchasers wanting to return items for credit may do so under the following conditions:

1. All returns require a Return Goods Authorization (RGA) number, which is active for 30 days from the date of issue. Contact Quick Fitting's Customer Service RGA assistance. Returned items must have the RGA# clearly visible on the outside of the package, along with any related documents or they cannot be accepted.
2. All inventory returns for credit must be received no later than the ninth month of the calendar year and the credit will be issued only to the original purchaser.
3. Private label and soft private branded products are not returnable for credit.
4. A 25% restocking charge will apply to all returns.
5. All returned items must be returned in their original packaging. Returned items must be complete with all manuals, documentation, etc. Acceptable returns must be in their original packaging, unused, free from defects or scarring and be current, non-obsolete product.
6. Returns must be made within 180 days of the date indicated on the original Purchase Order.
7. Custom items may not be returned for credit.
8. Products must be shipped back to Quick Fitting freight prepaid. Quick Fitting will not be responsible for any freight charges; duties, or fees and no credit will be given for them. Returns should be addressed to **Quick Fitting, Inc., Attn: Return Goods, 30 Plan Way, Warwick, RI 02886.**
9. Returns not meeting the above terms and conditions will be rejected and either returned to sender or disposed of at the senders written direction.
10. Quick Fitting will not be responsible for inventory returns that are lost or damaged during the transportation of the inventory to our facility. The original shipper should insure all returns to the full value of the return.

PAYMENT TERMS

All invoices are due upon receipt, unless credit terms have been established.

75-YEAR PROBITE® PRODUCT WARRANTY

Quick Fitting Inc., hereafter referred to as "Quick Fitting", warrants its PROBITE® fittings and adapters to be free of defects in material and workmanship in water service and other approved materials, for a period of seventy-five (75) years from the date of purchase of the products. **Quick Fitting** makes no other warranties, express or implied. **This limitation explicitly excludes any implied warranty of merchantability or fitness for a particular purpose.** The sole remedy for breach of this warranty of material and workmanship or for negligence in manufacture or design is limited to replacement or repair or the fitting, at the sole option of **Quick Fitting**, of any defective parts which are returned to **Quick Fitting** (prepaid) within seventy-five (75) years of original purchase. PROBITE® fittings contain a replaceable O-ring seal, which is warranted for replacement in water service for a period of (75) seventy-five years. In no event shall **Quick Fitting** be liable for indirect, special, incidental or consequential damages of any kind. No allowance will be made for repairs made by the purchaser.

7-YEAR PROBITE® VALVE & CONTROL WARRANTY

Supplier warrants its PROBITE® push fit ball valves, stop valves and controls to be free of defects in material and workmanship in water service and other approved materials, for a period of seven (7) years from the date of purchase of the products. Supplier makes no other warranties, express or implied. This limitation explicitly excludes any implied warranty of merchantability or fitness for a particular purpose. The sole remedy for breach of this warranty of material and workmanship or for negligence in manufacture or design is limited to replacement or repair of the fitting, at the sole option of Supplier, of any defective parts which are returned to Supplier (prepaid) within seven (7) years of original purchase. In no event shall Supplier be liable for indirect, special, incidental or consequential damages of any kind. No allowance will be made for repairs made by the purchaser.

5-YEAR PROBITE® SUPPLY LINE WARRANTY

Supplier warrants its PROBITE® push fit supply line connectors to be free of defects in material and workmanship in water service and other approved materials, for a period of five (5) years from the date of purchase of the products. Supplier makes no other warranties, express or implied. This limitation explicitly excludes any implied warranty of merchantability or fitness for a particular purpose. The sole remedy for breach of this warranty of material and workmanship or for negligence in manufacture or design is limited to replacement or repair or the fitting, at the sole option of Supplier, of any defective parts which are returned to Supplier (prepaid) within five (5) years of original purchase. In no event shall Supplier be liable for indirect, special, incidental or consequential damages of any kind. No allowance will be made for repairs made by the purchaser.

THIS WARRANTY IS EXPRESSLY IN LIEU OF ANY AND ALL OTHER WARRANTIES AND REPRESENTATIONS, EXPRESS OR IMPLIED, INCLUDING BUT NOT LIMITED TO, THE WARRANTY OF FITNESS FOR A PARTICULAR PURPOSE AND THE WARRANTY OF MERCHANTABILITY. THERE ARE NO WARRANTIES, WHICH EXTEND BEYOND THE DESCRIPTION ON THE FACE HEREOF. THE EXCLUSIVE REMEDY FOR DEFECTIVE PRODUCTS SHALL BE ONLY AS STATED HEREIN.

Quick Fitting does not warrant the design, assembly or installation of the system using PROBITE®, but only the components as stated herein. **Quick Fitting** is not responsible for improper design, assembly or installation, or for any modifications of the **Quick Fitting** products.

The warranty herein is void upon:

- a. failure to follow any of the assembly or installation guidelines;
- b. alteration, misuse or abuse of, or damage to, any of the Supplier products;
- c. operation beyond the design range, excessive pressure or stress, or mishandling in any way;
- d. use other than for the intended purpose or in a manner other than as specified by Supplier;
- e. improper assembly, installation, service or maintenance;
- f. use on fluids that are abrasive, aggressive, acidic, imbalanced PH or containing metals or chemicals.

This Limited Warranty, and **Quick Fitting's** responsibility, may be further limited, but may not be expanded, by **Quick Fitting's** terms and conditions of sale, as set forth on the reverse side of the **Quick Fitting** invoice.

WARRANTY SERVICE INFORMATION

Quick Fitting, Inc.
Attn: Warranty Claim
30 Plan Way
Warwick, Rhode Island 02886
Tel: (877) 238 – 4826 • Fax: (877) 258 - 4826